

DARKROOM : PHOTO EDITING

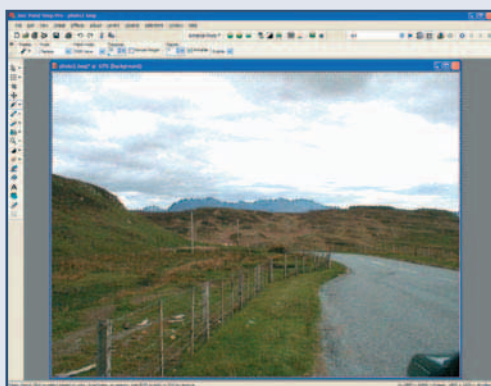
TUTORIAL INFO

WRITER	SOFTWARE	ALTERNATIVES	TIME REQUIRED	DIFFICULTY
Dave Cusick	Jasc Paint Shop Pro 8	Adobe Photoshop Elements 2, or Ulead PhotoImpact XL	15 minutes	Easy

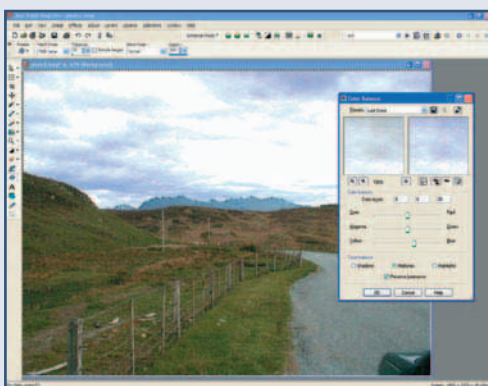


Adding a Blue Sky

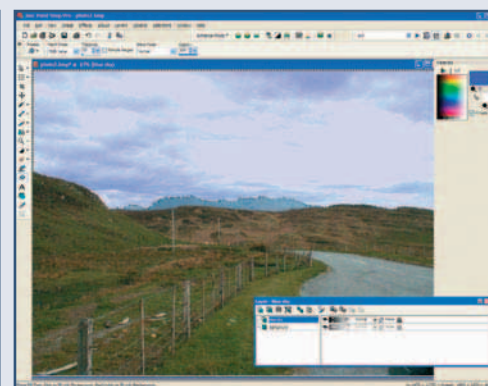
Replace white and featureless sky with something altogether more striking



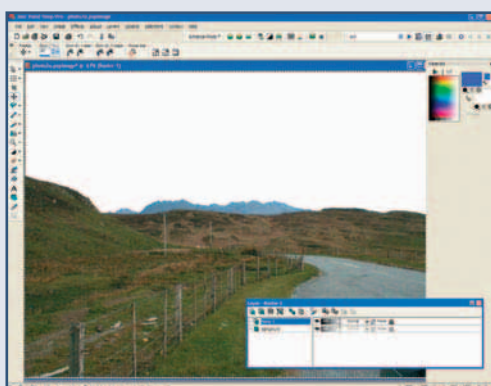
1 If a pale sky has a hint of blue in it, the colours already present can be enhanced. First, use the Magic Wand tool to select the sky. As long as there aren't too many buildings or trees in the foreground this should be quite simple. If there are tricky objects to work around then zoom in and take your time, holding down the Shift key to add more areas to the selection or the Ctrl key to remove areas. Increase the Tolerance setting to select larger areas at once, or decrease it for finer control.



2 Choose Adjust... Colour Balance... Colour Balance. With the Midtones option selected at the bottom, drag the bottom Yellow-Blue slider towards blue, so that the third colour level figure changes to 20. Then select Shadows at the bottom of the dialog box and again set the Blue value to 20. Finally, select Highlights at the bottom and set the Blue value for this to 20 too. Click the Proof button to see how it looks, and if you're happy then click OK to apply the change.



3 Another trick involves overlaying a blue tinted layer on top of the sky. With the sky still selected, choose Layers... New Layer. Give the layer a name such as 'Blue Sky' and then bring up the Materials palette using View... Palettes... Materials. Pick a deep blue and use the Flood Fill tool to colour the selected area of your new layer in this colour. Bring up the Layers palette (using View... Palettes... Layers) and reduce the opacity of the Blue Sky layer to around 20 per cent.



4 In extreme cases a sky may have to be completely replaced. The easiest way to do this is to select the sky, then invert the selected area (Selections... Inverse) so that everything except the sky is selected. Copy this foreground area to the clipboard using Ctrl-C, and paste it as a new layer by hitting Ctrl-L. Then in the Layers palette, click on the background, hit Ctrl-A to select it all, and hit Delete to erase it. Now reposition the foreground layer at the bottom of the picture.



5 Find another picture with a suitable sky. Select the entire image using Ctrl-A, copy it using Ctrl-C, and close the file again. Back at the work-in-progress picture, hit Ctrl-L to paste the selection as a new layer. Position the layer behind the foreground layer, and then use the Deform tool to resize and reposition it so that only the sky is visible. For this final shot, the edge of the car which was spoiling the bottom right corner of the picture has also been removed using the Clone tool.